



TEAM ANGELWOLF

Inclusive Impactivity

- ... inclusion for all
- ... inclusion for good
- ... inclusion for impact

#BeAnIncluder

- ... leave nobody out!
- ... leave nobody behind!

TEAM ANGELWOLF

IMO CHAIR (Impact Mobility Chair)

For Global Inclusive Impactivity



3 GOOD HEALTH AND WELL-BEING



6 CLEAN WATER AND SANITATION



11 SUSTAINABLE CITIES AND COMMUNITIES



RECORD



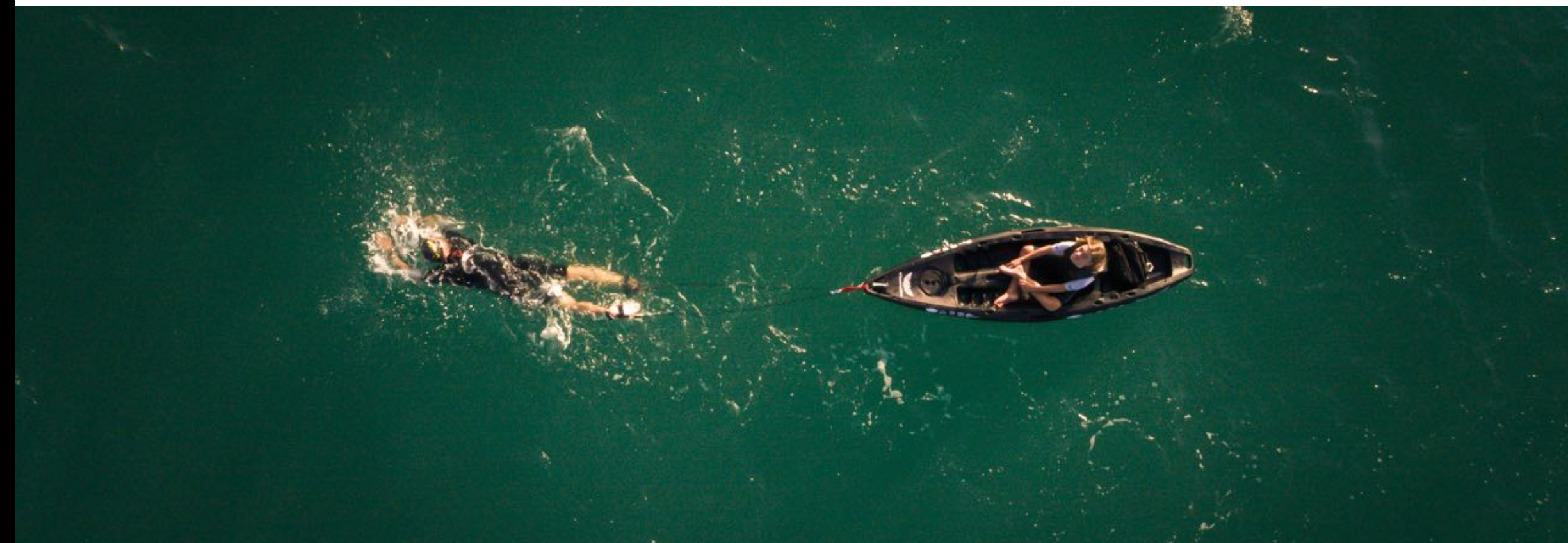
HOLDER

CONTENTS



Discovering a world that is not truly accessible & inclusive for all!

- PAGE 3: OUR **STORY** | TEAM ANGELWOLF
- PAGE 4: THE **PROBLEM** | WE DISCOVERED
- PAGE 5: THE **PROBLEM** | STATISTICS
- PAGE 6: THE **PROBLEM** | WE DISCOVERED (CONT.)
- PAGE 7: THE **SOLUTION** | IMO = IMPACT MOBILITY CHAIR
- PAGE 9: MAKING THE **SOLUTION** REALITY
- PAGE 10: FUNDING **REQUIRED** | FOR PHASE 2
- PAGE 11: WHY **GET INVOLVED**
- PAGE 12: **CONTACT**



OUR STORY | TEAM ANGELWOLF



RIO 20 A PERSON WITH DISABILITIES

Discovering a world that is not truly accessible and inclusive for all!

In the quiet corners of our world, **Team AngelWolf** was born, from a deeply personal journey, by a British expat family, residing in Dubai, United Arab Emirates.

A decade ago, Rio, our eldest child, (20, a person with disabilities from a rare chromosome condition - '1q44 deletion denovo') discovered a passion for inclusive races, particularly triathlons. To participate in inclusive triathlons, Rio's dad or younger sister would swim pulling him a kayak, cycle on an adapted bike where Rio has a seat on the front and run pushing Rio in his running chair. They covered distances from sprints to Half Ironmans. This led to participating in other races like marathons, ultra distances and obstacle courses ... always including Rio.

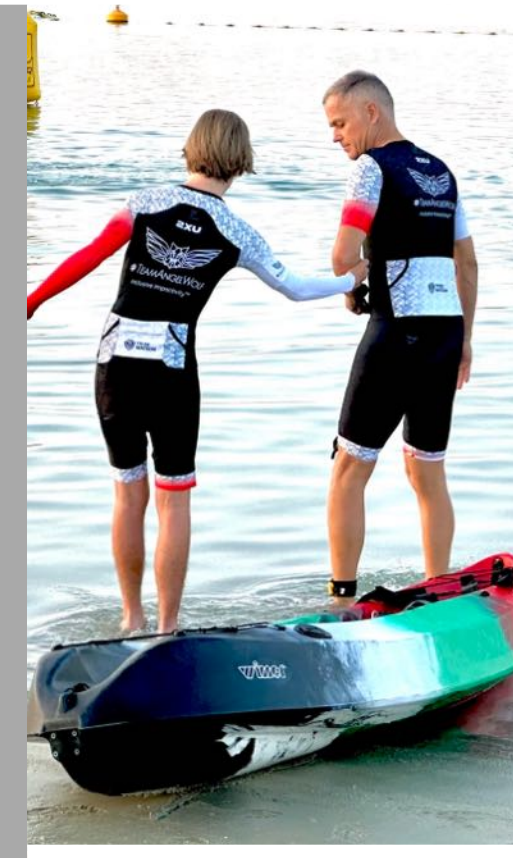
So far Rio has participated in over 500 races internationally, with inclusion, covering over 14,500kms.

For Rio, racing weekly fulfilled a passion and purpose for him and made him feel 'included' within community, with equity not pity.

Globally, it has showcased the transformative power of sports for individuals with disabilities.

Motivated by Rio's experience, & witnessing individuals within the community (with & without disabilities) desire to be involved in our projects of inclusion, we embarked on a mission to make such opportunities universally accessible, by setting up a non profit foundation **Team AngelWolf** to provide Inclusive Impactivity for all. With this platform we give:

- **IMPACT TALKS:** About our story & mission
- **IMPACT WORKSHOPS:** About Accessibility & Inclusion
- **IMPACT ACTIVITIES:** To give opportunity to the community (with & without disabilities) to experience true inclusion together
- **IMPACT CONSULTATIONS:** To assist companies and community to become more accessible & inclusive



Team AngelWolf take their audience on a journey to discover a fresh look at inclusion. From breaking down unconscious bias & fears to the Sustainable Development Goals bringing a fresh perspective, understanding & value to inclusion that is observable, measurable and achievable.

Team AngelWolf social impact sessions build:

- **Motivation** to act
- **Knowledge** to inform
- **Experience** to understand

TAW is all about **Inclusive Impactivity**

THE PROBLEM | WE DISCOVERED



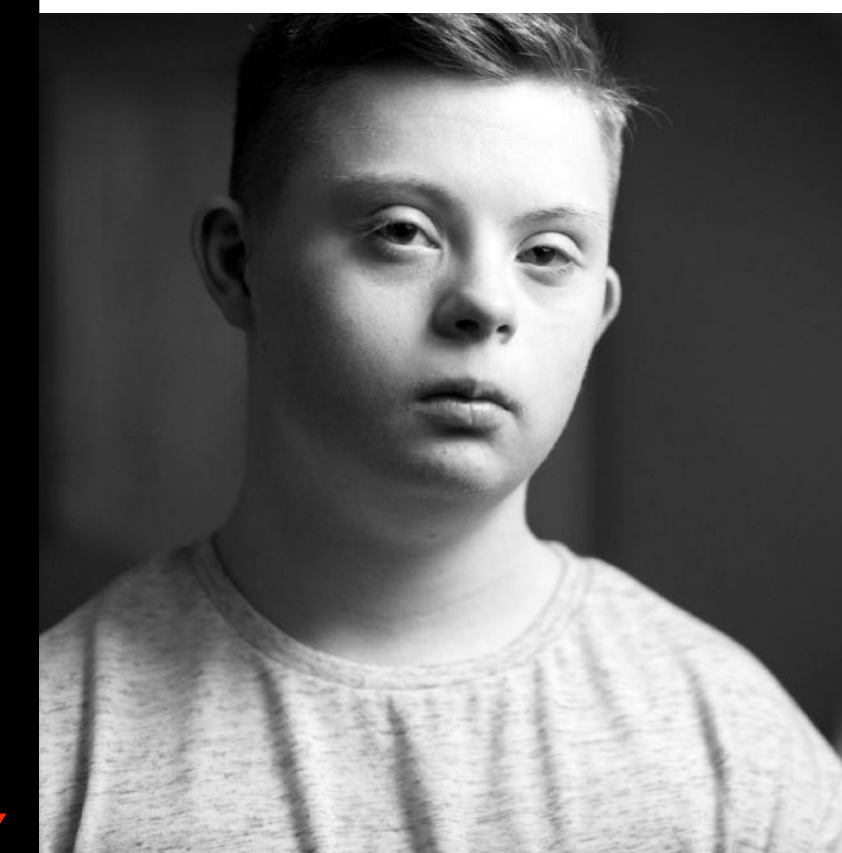
ACCESSIBILITY IS A GLOBAL PROBLEM

The further we got in our mission, the challenge became evident as we saw a stark disparity in accessibility that prevented community inclusion, especially for individuals with disabilities, the elderly, & minority groups in deprived and crisis-stricken nations.

- We knew there were many opportunities for segregated 'disabled only' activities/events, often seen as 'charitable' activities but realised that there was a lack of opportunity for real community inclusion with equity, that included people with & without disabilities, participating together - **WHY?**
- We noticed that in community races globally, there were not many other people with disabilities participating in the events - **WHY?**
- On hikes on rough terrain in nature, we realised there were not many other wheelchair users or elderly out enjoying the same beautiful, therapeutic scenery - **WHY?**
- When we watched the news, we saw horrific scenes of people in war zones or disaster areas evacuating, but we didn't see the elderly or people with disabilities within the crowds dispersing - **WHERE WERE THEY? WERE THEY LEFT BEHIND?**
- Watching reports in third world countries, we could witness the struggle to transport much needed clean water supplies - **WHY?**

Then as the world of inclusion opened up to us, with our son's disability & people we became connected with, and, a whole new educational journey, we realised the answers to all this was simply accessibility ... having the right equipment.

The absence of purpose-built chairs limited a segment of societies ability to enjoy outdoor activities, hindering both physical movement and the profound connections forged through shared experiences - community inclusion.



THE PROBLEM

STATISTICS



PEOPLE WITH DISABILITIES:

- **25%:** Either directly or indirectly impacted by a disability within the overall population.
- **2%:** Of the working-age population experiences disability annually.
- **83%:** Of people with disabilities acquired their disability, resulting from **Accidents, Illness & Conflicts**

WHEELCHAIR USERS:

- **65 Million:** Wheelchair **USERS** worldwide.
- **In 156 Developing Countries:** Almost **2%** or **121,800,000** people **REQUIRE** wheelchairs.

WATER:

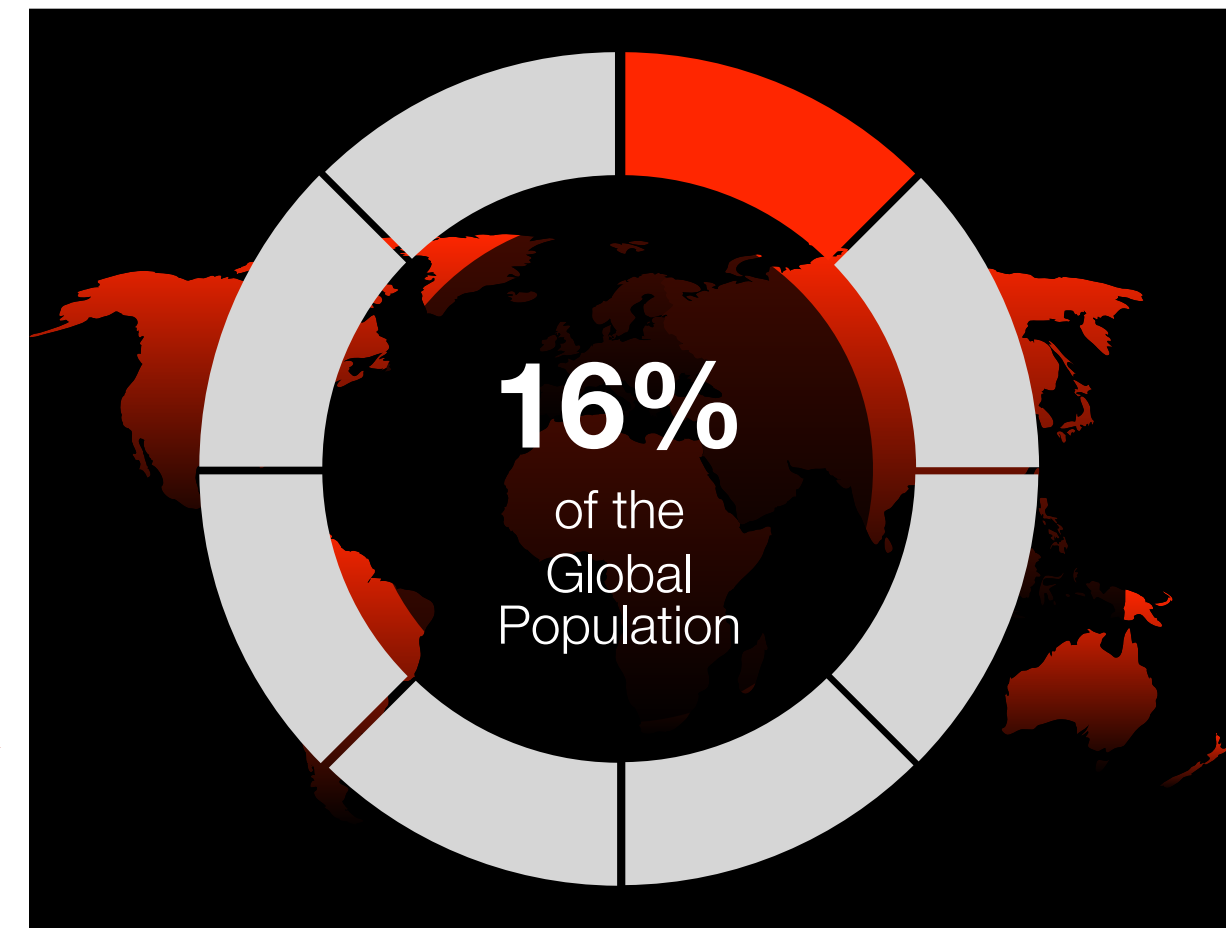
- **2 Billion:** People around the world do not have access to clean and safe drinking water.

240 MILLION



UNDER 18 LIVE WITH A DISABILITY

1.3 BILLION PEOPLE



LIVE WITH A DISABILITY

1 BILLION

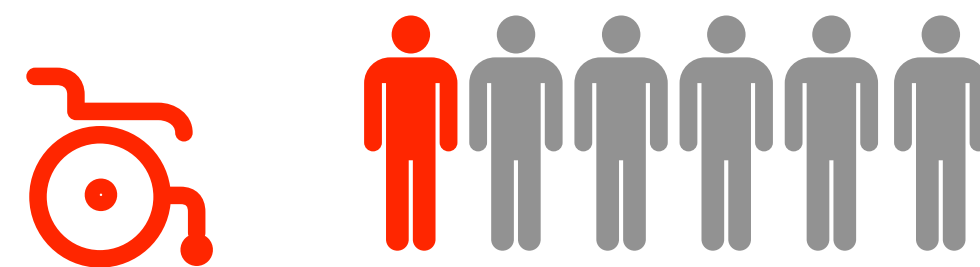


GLOBAL POPULATION OVER 60

WHY TEAM ANGELWOLF IMO CHAIRS (Impact Mobility Chair) ARE NEEDED

1. PEOPLE WITH DISABILITIES

- **1 in 6 PEOPLE:** Live with a Disability



2. THE ELDERLY

- **By 2050:** The proportion of the world's population over 60 years will grow to **2.1 Billion**



3. DISASTER AREAS

- **9.7 Million:** People with disabilities are forcibly displaced as a result of conflict and persecution



SO HOW MANY PEOPLE GET LEFT BEHIND?

LAUNCH WITH 1,000 TEAM ANGELWOLF IMPACT MOBILITY CHAIRS

THE PROBLEM | WE DISCOVERED



The urgent need was clear – to create chairs tailored to empower individuals of all abilities, enhancing their access to sports & outdoor terrains & safety - a chair that could not only connect community for the elderly & disabled but also provide a solution for evacuation for the vulnerable in disaster areas & a chair that could be adapted to carry vital clean water supplies.

The next issue was cost. The people that truly need the chairs the most, are least likely to afford them.

WE WANTED TO CREATE A SOLUTION



THE SOLUTION

| IMO = IMPACT MOBILITY CHAIR

+ 500 RACES OF KNOWLEDGE & LESSONS

After participating in over 500 races, we loved the chairs we used; to the point we have 5 sponsored chairs (that we use with community activities/race, so others can join us in inclusion) but we know what changes should be made to them, to make them even better & how they need seriously adapting to resolve the challenges of the problem we had discovered.

Our solution to the problem, was to design our own chairs, & source corporate sponsorship to fund the chairs, so that they can be gifted to those that truly need them but cannot afford them.

So with professional designers, the designs started for the ... **Team AngelWolf IMO Chairs**

... **IMO = Impact Mobility Chair**

Team AngelWolf IMO Chairs create a variety of purposeful opportunities that engender social cohesion, inclusive participation, & community value for targeted groups globally.

The chairs serve as not only a mobility solution but also one of positive empowerment & social impact by breaking the exclusion barrier. Social inclusion sits at the heart of this project.

The chairs address a global accessibility & inclusion gap, to provide what we call **Inclusive Impactivity**.



OUR IMO CHAIR SERVES THREE DISTINCT PURPOSES:

- 1. WELLNESS:** Empowering individuals with disabilities to actively participate in sports & outdoor activities, fostering inclusive engagement & a sense of community.
- 2. CONNECTION:** Facilitating a seamless connection between elderly individuals & their communities, as well as providing access to outdoor environments, ensuring they remain an integral part of social life.
- 3. RELIEF:** Addressing the unique needs of marginalised groups in developing nations, disaster-stricken areas, & communities affected by war. Our chairs aim to provide essential support, mobility, & comfort in challenging circumstances, contributing to the restoration of normalcy and well-being.

THE SOLUTION

IMO CHAIR

VISION



- The vision is that the chairs will be sponsored, then gifted for free & utilised in a number of ways
- This project fulfils many of the UN's SDG's, a commitment to which we all are ascribed & play a vital role in achieving.
- This is a solution-focused, social impact movement; together we can create Inclusive Impactivity!

ONE CHAIR: DESIGNED TO SUPPORT, ASSIST & ENHANCE THE LIVES OF **THREE** DISTINCT GROUPS:

1
ACCESSIBILITY FOR PEOPLE WITH DISABILITIES FOR INCLUSION IN SPORT & OUTDOOR ACTIVITIES:



So People With Disabilities have accessibility to be included in sporting events (e.g., running races where they can work as a team, they are the rider of the chair & their other team member is the pusher, together they complete the event) & outdoor activities (e.g., family/community walks in the countryside on different terrains, that everyday wheelchairs cannot manoeuvre over comfortably). An amazing opportunity to create a platform of real inclusion & bonding, within families & community.

2
ACCESS FOR THE ELDERLY TO DO OUTDOOR ACTIVITIES:



The chairs are also ideal to provide elderly community members the opportunity to enjoy outdoor activities, safely & comfortably within the community. The Chairs are ideal to assist our senior citizens who have mobility challenges to get outside in the fresh air of the community, access social connection with others & enjoy different environments without worry of the type of terrain. Social inclusion in outdoor activities (e.g., joining in a community or family walks in areas that everyday wheelchairs would struggle to safely & comfortably manoeuvre) This would create an important platform for our elderly to not feel isolated, to feel part of the community & to enjoy the simple everyday pleasures of the outdoors.

3
MOBILITY SOLUTION FOR MINORITY GROUPS IN DEVELOPING NATIONS, DISASTER AREAS, & COMMUNITIES AFFECTED BY WAR:



The chairs offer a vital solution to communities living in at-risk, vulnerable & disadvantaged areas. Whether born with a disability or have acquired on prior to or during war, the chairs provide an accessible means with which they may be assisted or empowered to move about safely during the crisis. When citizens are excluded due to lack of accessible infrastructure or displaced & forced to abandon their home & communities due to war or disaster, people with disabilities & the elderly are most vulnerable to being left behind. These two minority groups are often isolated & segregated from their community. The chairs offer a solution that otherwise could not be achieved by a standard wheelchair, thus bridging the accessibility & inclusion divide within their community & enable improved inclusion & participation within the social fabric of their community & provided an efficient means to transport water & essential goods to & from remote areas.

MAKING THE SOLUTION REALITY



PHASES & THE FUNDING

Once the **Team AngelWolf IMO Chair** is ready for production, our goal is for corporate/community to sponsor the chairs, so that the chairs can be gifted to be utilised by a community of the companies/group choice, in a country of their choice: **e.g**

- **A chair going to a sports leisure centre in England:** where the chair is stored and looked after at the leisure centre; and then families with a person with disabilities within that community, can book turns to use the chairs in community lead running races; where the person with disabilities is the rider and family or community or the corporates are the pushers. Corporates who sponsor the chairs have the option to be more involved with the community projects.
- **A chair going to a senior citizen home in Australia:** where the chair is stored and looked after at the centre home, and the corporate team or members of the community can organise community country walks (without worrying about terrain), and the residents of the home can be included and participate in the outings by being riders in the chairs and the corporate workers/community can assist with being the pushers; enjoying the experience together.
- **A chair going to a part of Africa that is in a war zone:** where the chair helps to evacuate the elderly or people with disabilities out of an area that is affected by war, so that they can be with their families and community. The chair is also adaptable to carry water to assist the community to transport clean water and essentials goods.



FUNDING:

To get to a stage where we can approach companies to sponsor the chairs, we need to a prototype of the chair, for them to see what they are investing into!

To get to the stage we can go live with the chair, we have split the process into 6 phases, where we need assistance for the funding to make it possible, from philanthropists, crowd funding or corporate sponsorship.

Details on the following page about the phases and funding.

We have discussed the IMO Chairs with international organisations such as UNICEF, they have already shown great interest.

FUNDING REQUIRED



FOR PHASE 2

FUNDING NEEDED:

- In order to successfully conclude **PHASE 2**, Team AngelWolf is reaching out to the community for support, inviting participation through various avenues, including:

1. Philanthropic Contributions
2. Crowd Funding Initiatives
3. Corporate Sponsorship Opportunities

WHY TEAM ANGELWOLF?

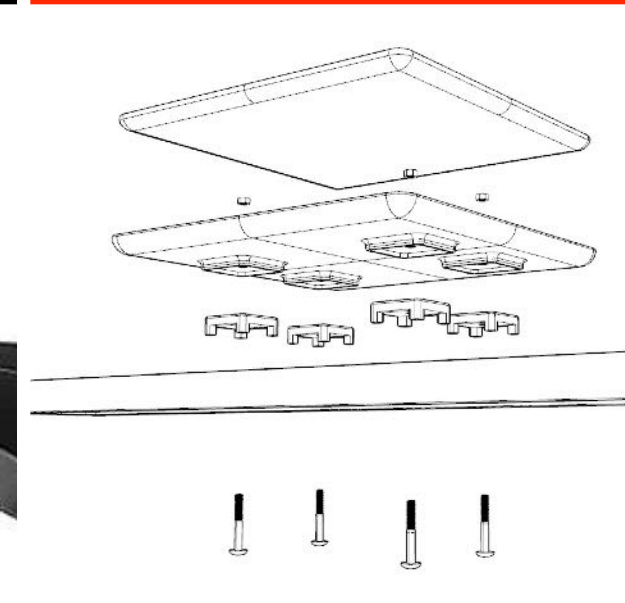
- Team AngelWolf is a non-profit organisation, that advocates for an inclusive, active life with People With Disabilities.
- Team AngelWolf's dedicated work and achievements, show proven commitment and consistency with providing & encouraging global community inclusion opportunities & education.

PHASE 1
CONCEPT
DESIGN



Funded by Tribe Watson

PHASE 2
PROTOTYPE
+ INDUSTRIAL DESIGN



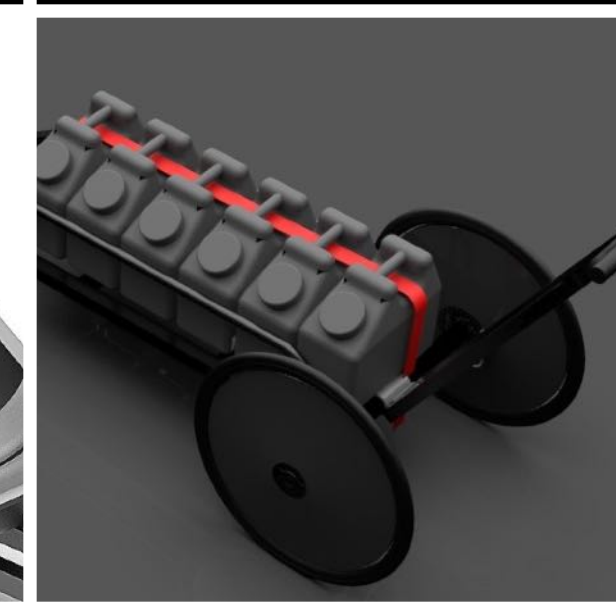
Funded by Philanthropists, Corporates, Crowd Funding

PHASE 3
VALIDATION
+ TESTING



Funded by Philanthropists, Corporates, Crowd Funding

PHASE 4
PACKAGING
+ LOGISTICS + LEGAL



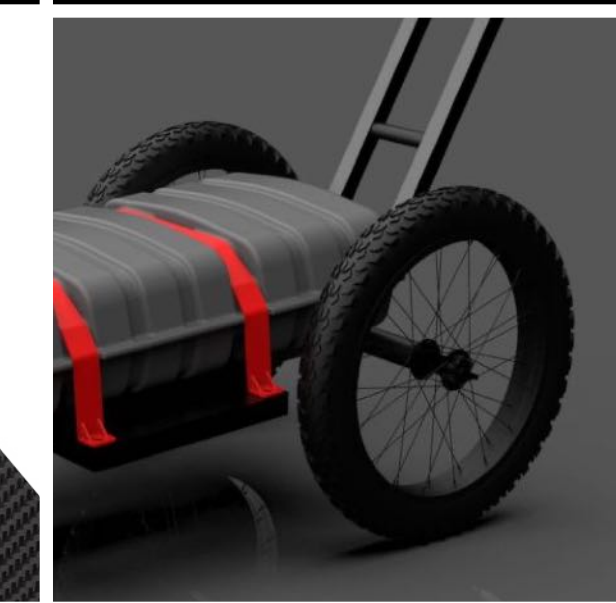
Funded by Philanthropists, Corporates, Crowd Funding

PHASE 5
MARKETING
+ PR



Funded by Philanthropists, Corporates, Crowd Funding

PHASE 6
GO
LIVE



Funded by Philanthropists, Corporates, Crowd Funding

FUNDING NEEDED for Phase 2: We are seeking financial support to advance to the next stage of our project

Industrial Designs	X2 Prototype Builds	TOTAL
20,000 Euro	15,000 Euro each	50,000 Euro

FINANCIAL AVENUES FOR FUNDING Phase 2: Our diverse funding opportunities for our project

1. Philanthropists		2. Crowd Funding		3. Corporate Sponsorship	
--------------------	--	------------------	--	--------------------------	--

PROJECTED CHAIR MANUFACTURING: Anticipated Production Figures

ESTIMATED COST PER CHAIR:	2024	2025	2026	2027
7,500 Euro	100 Chairs	250 Chairs (+150%)	500 Chairs (+100%)	1,000 Chairs (+100%)

WHY | GET INVOLVED?



Many do not get concerned about accessibility or inclusion, as it does not immediately affect them.

- The fact is **1 in 6** people have a disability, that is **16%** of the population
- **1.3 billion** people (the population of China).
- **83%** of those disabilities were acquired after birth (e.g an accident), they were not born with it ... so disability could affect any of us or our families, at any time ... so accessibility and inclusion should be the concern of us all!

Not only this, it is important to **“Be An Includer”** & **“Leave Nobody Behind”** as it is the right thing to do, we need to live by example for the next generation and it is each one of our Sustainable Social Responsibility Humanity can only survive with teamwork and community!

Team AngelWolf envisions a global ripple effect. By mid-2024 picture our running chairs weaving through communities, providing not only mobility but also becoming catalysts for meaningful interactions. Envision volunteers engaging with residents in elderly care homes, offering invigorating runs & tranquil countryside walks, fostering connections that transcend physical limitations. See the chairs on television news reports, evacuating people with disabilities/elderly from disaster areas & carrying essential supplies & clean water in developing areas.

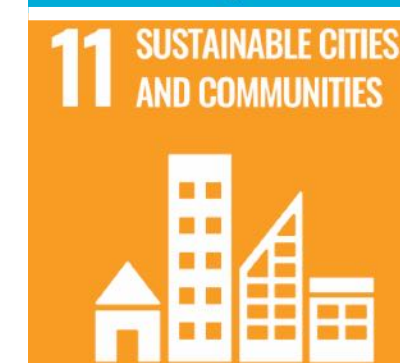
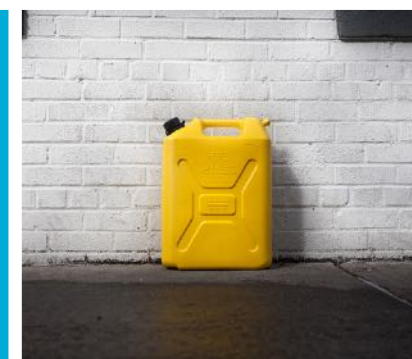
This isn't just a mission; it's an invitation to join a transformative journey; a Social Impact Movement. **Team AngelWolf** calls on you to recognise the urgency of this cause. The opportunity is immense, the impact profound, & the need pressing. With the support of our corporate partners & dedicated volunteers, we strive to empower communities, one purpose-built chair at a time.



WILL YOU BE PART OF THIS TRANSFORMATIVE NARRATIVE?

TOGETHER let's be the catalysing agents of sustainable social impact by erasing the lines of exclusion & paving the way for community, active living, adventure, & sport for all, that excludes no one

- **Inclusive Impactivity!**



#BeAnIncluder

... leave nobody out!
... leave nobody behind!

TOGETHER let's be the catalysing agents of sustainable social impact by erasing the lines of exclusion and paving the way for community, active living, adventure, and sport for all, that excludes no one -
Inclusive Impactivity

THANK YOU for embracing **Inclusive Impactivity!**

Inclusive Impactivity™

[adjective in-kloo-siv] [noun im-pak-tiv-i-tee]

The brand ethos of Team AngelWolf.

Including or encompassing all/everyone; comprehensively; an inclusive team event; an inclusive activity; embracing; welcoming; all-together; The WolfPack; to have a positive impact, effect or impression through movement; energy; the state or quality of being active; being visible; impacting the community.

CONTACT US

E | nick@teamangelwolf.com

M | +971 58 5599881

W | teamangelwolf.com

S | [@teamangelwolf.com](https://www.instagram.com/teamangelwolf)

